



ADVENTURE PRODUCTS

PRODUCT CATALOG

ENGLISH



WE BUILD
ADVENTURE

03 OVERVIEW

07 SKY TRAIL®

25 SKY TYKES®

29 SKY RAIL®

33 SKY TOUR®

37 CLIP 'N CLIMB®

45 ADVENTURE TRAIL®

53 ADVENTURE TYKES™

57 DESTINATION

59 AMAZE'N MAZES™



BUILDING ADVENTUROUS SOLUTIONS

Since 1989, RCI Adventure Products has been about one thing: Adventure. Now into our fourth decade, we've learned a lot about the industry, worked with clients around the world and grown into our own as a company. With time we've become more than just a "ropes course company." RCI offers a full, and continuously growing, portfolio of adventure attractions.

This new era of our company further strengthens our belief that every product created requires special care, dedication of time and close attention to ensure clients, as well as end users, are satisfied. Throughout the entire process of transforming your idea from concept to reality, RCI will work to ensure all stages go smoothly and once installed, provided lifetime support and customer service will make certain attractions are maintained and/or optimal for use. Whatever your budget, space or target audience, RCI is here to customize the right products to thrill each and every individual visiting your location.





OVERVIEW

SKY TRAIL

SKY TYKES

SKY RAIL

SKY TOUR

CLIP 'N CLIMB

ADVENTURE TRAIL

ADVENTURE TYKES

DESTINATION

AMAZE'N MAZES

THE RCI DIFFERENCE

RCI has long had a passion for custom manufacturing, installing and servicing innovative adventure products. Whether it's Sky Trail® aerial attractions or Clip 'n Climb® climbing activities, we are dedicated to finding the right product for you, your business and your customers no matter what industry you belong to. Giving you the best experience is a priority and our team of highly skilled sales personnel, designers, engineers, installers and account managers are here to provide support through each milestone to ensure you are both kept on budget and informed. At the end of the day, a clients' success is our success.

REASONS TO PARTNER WITH RCI



Years of industry experience



Global collaborations with industry frontrunners



Lifetime quality customer support



New revenue streams



Install & training turnkey solutions



Patented, safety focused attractions



Custom design and theming options



Increase in secondary sales



OVERVIEW

SKY TRAIL®

SKYTYKES®

SKY RAIL®

SKY TOUR®

CLIP 'N CLIMB®

ADVENTURE TRAIL™

ADVENTURE TYKES™

DESTINATION

AMAZEN MAZES™

PATENTED TECHNOLOGY

A steadfast commitment to safety and a firm adherence to the ever-changing amusement industry standards separates RCI from other adventure product manufacturers. RCI upholds technical safety standards under several governing body organizations, such as those shown below, for all product design, fabrication and installation.



RCI makes every effort to include the very best, latest and safest technology in our designs and employ redundant systems where applicable to ensure every single participant is kept secure while they have fun.

SINGLE REDUNDANT SLINGLINE

A lanyard that connects a participant's harness with their trolley slider assembly. The slingline uses dual webbing for redundancy and utilizes a series of webbing loops to allow for adjustment to fit each participant's specific height.

FIVE POINT HARNESS

A full body harness that adjusts in the back, on the legs, as well as on the hips to create maximum security for participants who choose to experience the Sky Trail®, Sky Tykes® or Clip 'n Climb® attractions.

GATE SYSTEM (SKY RAIL®)

Ensures that only one guest can ride the Sky Rail® at a time, that guests cannot ride the Sky Rail® before the decelerator system is reset and prevents guests from walking into the landing path of guests riding the Sky Rail®.

PASSING BELAY SYSTEM

Overhead tracking system with column rings that allow guests to pass each other and to traverse the course in any path they choose.

TROLLEY SLIDER ASSEMBLY

The slingline's redundant slider assembly can only be inserted or taken out of the track at the entrance/exit of the Sky Trail® or Sky Tykes® course.

ZIG ZAG TRACKING

Prevents participants from sliding uncontrolled down inclines.



Sky Trail®

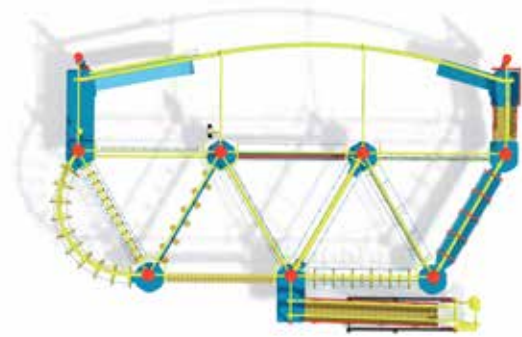
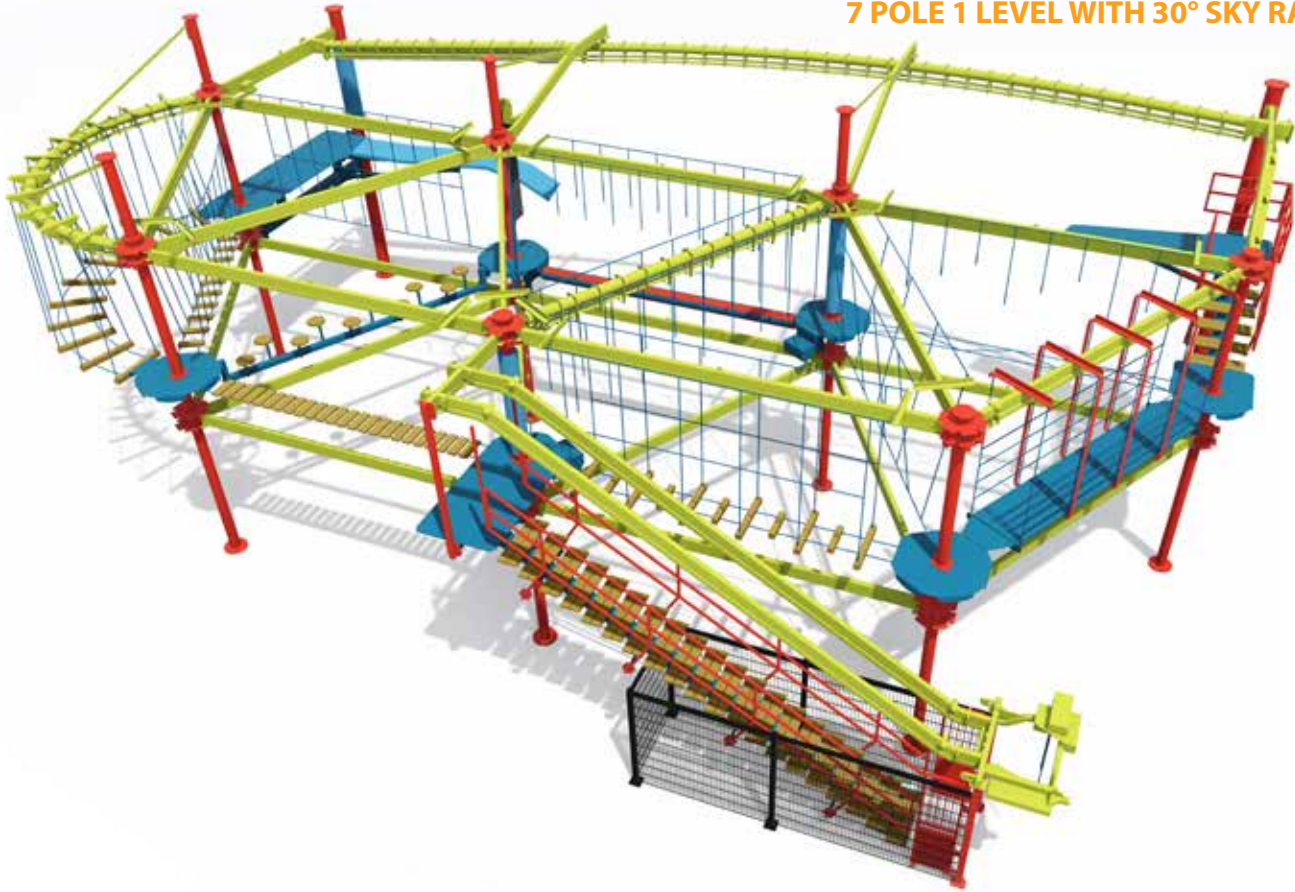
Fully customizable with various themes, colors, interactive elements and ideal for both indoor and outdoor spaces, Sky Trail® aerial attractions deliver unforgettable, thrilling and challenging experiences to participants of all ages in facilities around the world. Whether its entertaining passengers onboard a sailing cruise ship or wowing mall-goers, Sky Trail® is a versatile fit for any industry!

FEATURES & BENEFITS

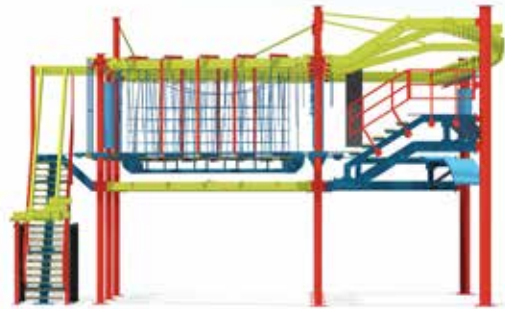
- + **Boost in secondary sales:** Longer dwell times lead to additional sales in food, beverages and retail items available onsite
- + **Time-tested equipment:** Utilizes U.S. patented overhead tracking system and time-tested safety equipment such as single redundant slinglines, full body harnesses, double locking carabiners and more to ensure participants are secure throughout the entirety of their experience. Each participant is properly outfitted with the necessary safety equipment, including the correct fitting harness and inspected prior to beginning
- + **Low operation costs:** minimal maintenance required thanks to durable materials that give the family friendly attraction the longevity needed to entertain indoors or outdoors during peak hours
- + **Customizable & versatile:** A variety of elements, color schemes and theme choices appeal to all ages and skill levels

SKY TRAIL®

7 POLE 1 LEVEL WITH 30° SKY RAIL®



PLAN



ELEVATION

DATA TABLE

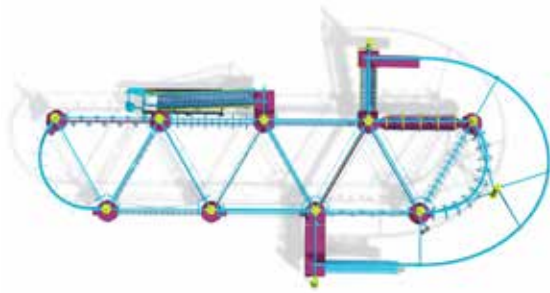
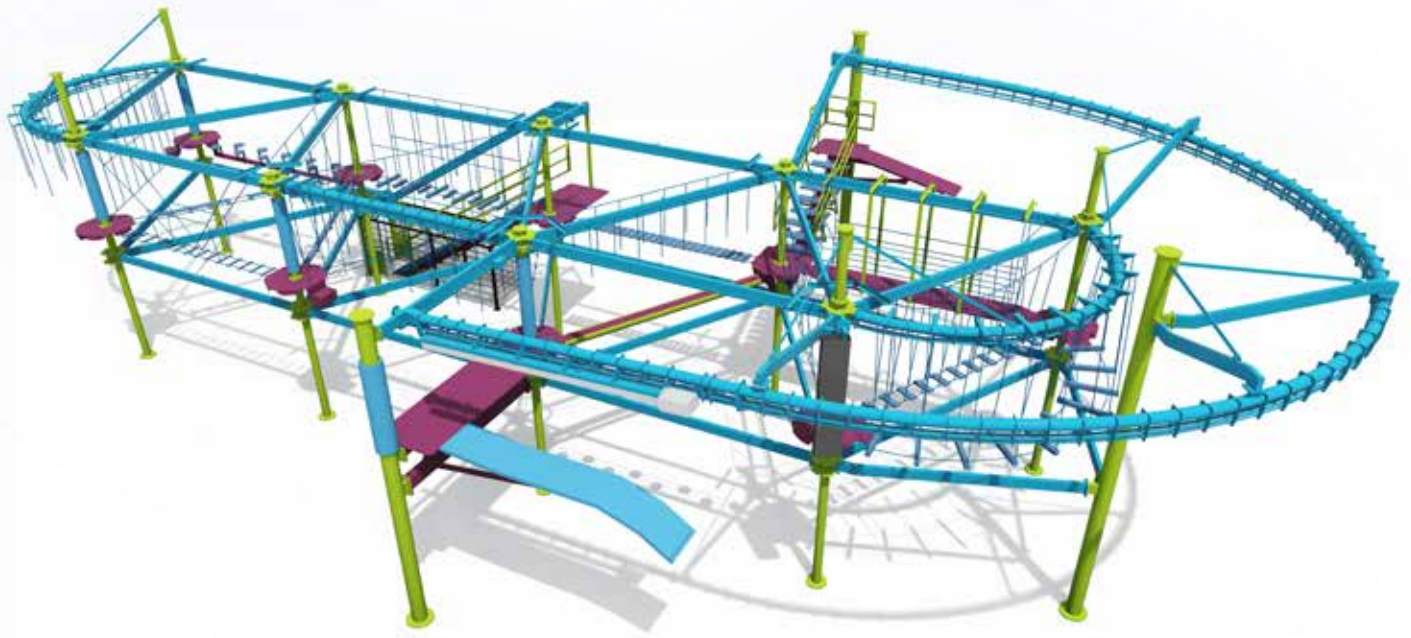
7 Pole 1 Level Sky Trail® with (1) 30° Sky Rail®

# of Elements	Instant Capacity	Capacity Per Hour	Approx. Dwell Time	Imperial (ft/in)			Metric (m)		
				Length	Width	Area	Length	Width	Area
11	30	90	20	66' 4"	45' 3"	3004 ft ²	20.22m	13.80m	279m ²
Unique Sky Rail® Lengths				60' 0"			18.29m		
Clearance Under Course				9' 0"			2.75m		
Top of Steel Height				24' 0"			7.32m		

*Note: Sky Trail® layout and color scheme can vary based on client and site specific needs.

SKY TRAIL®

9 POLE 1 LEVEL WITH 180° SKY RAIL®



PLAN



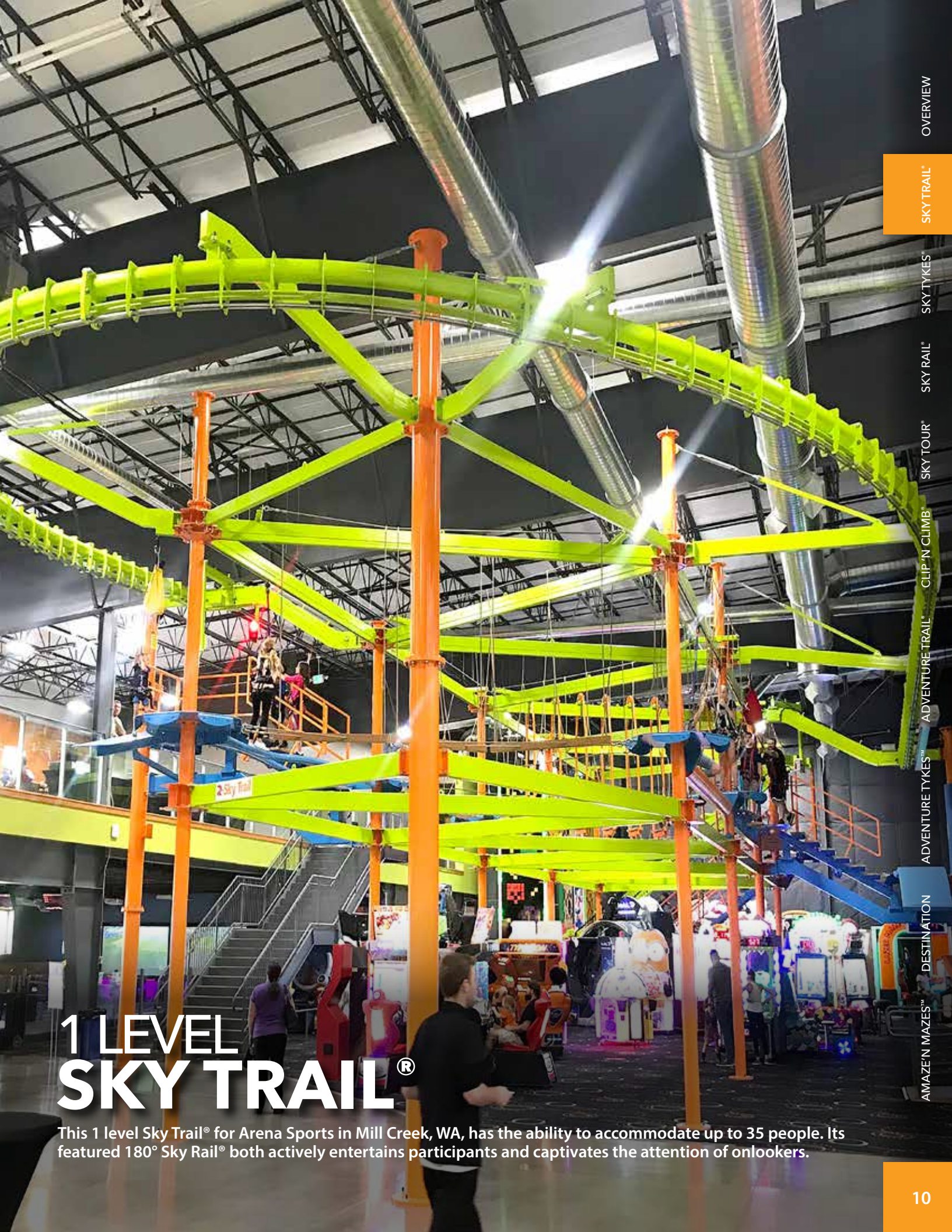
ELEVATION

DATA TABLE

9 Pole 1 Level Sky Trail® with (1) 180° Sky Rail®

# of Elements	Instant Capacity	Capacity Per Hour	Approx. Dwell Time	Imperial (ft/in)			Metric (m)		
				Length	Width	Area	Length	Width	Area
16	35	105	20	98' 10"	46' 10"	4640 ft ²	30.13m	14.28m	431m ²
Unique Sky Rail® Lengths				98' 7"			30.05m		
Clearance Under Course				9' 0"			2.75m		
Top of Steel Height				25' 4"			7.73m		

*Note: Sky Trail® layout and color scheme can vary based on client and site specific needs.



1 LEVEL SKY TRAIL®

This 1 level Sky Trail® for Arena Sports in Mill Creek, WA, has the ability to accommodate up to 35 people. Its featured 180° Sky Rail® both actively entertains participants and captivates the attention of onlookers.

OVERVIEW

SKY TRAIL®

SKY TYKES™

SKY RAIL®

SKY TOUR®

CLIP 'N CLIMB®

ADVENTURE TRAIL™

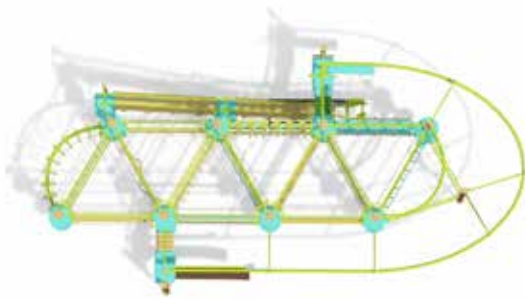
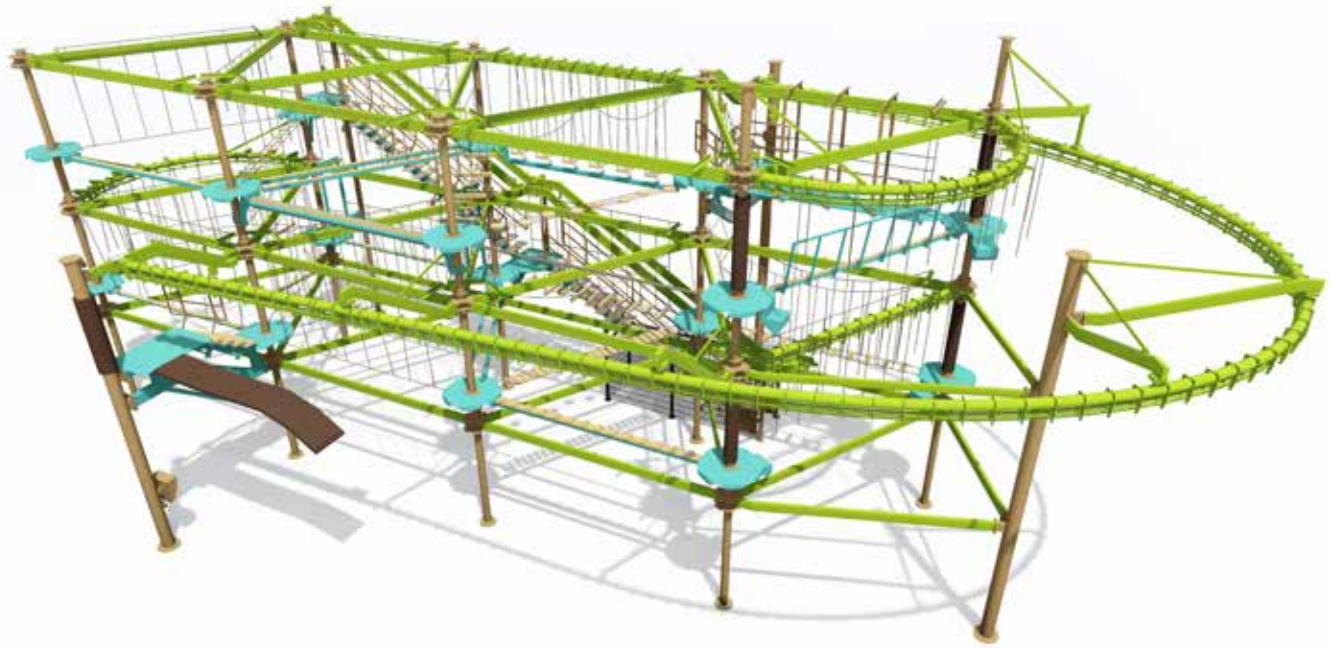
ADVENTURE TYKES™

DESTINATION

AMAZEN MAZES™

SKY TRAIL®

8 POLE 2 LEVEL WITH 180° SKY RAIL®



PLAN



ELEVATION

DATA TABLE

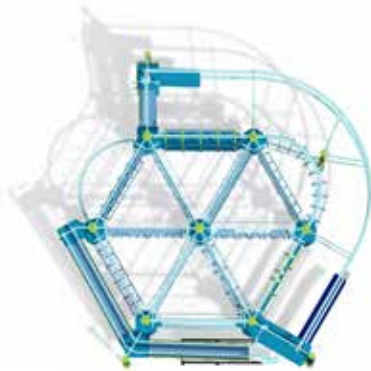
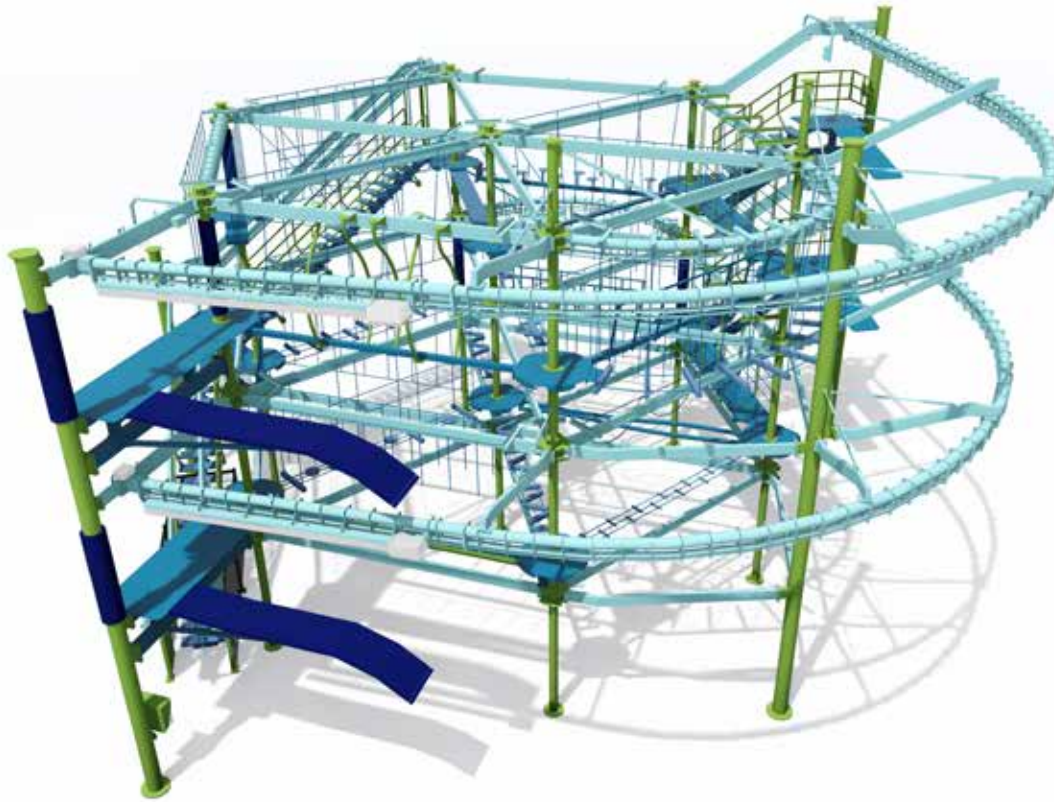
8 Pole 2 Level Sky Trail® with (1) 180° Sky Rail®

# of Elements	Instant Capacity	Capacity Per Hour	Approx. Dwell Time	Imperial (ft/in)			Metric (m)		
				Length	Width	Area	Length	Width	Area
27	50	100	30	98' 4"	50' 11"	5009 ft ²	29.98m	15.52m	466m ²
Unique Sky Rail® Lengths				123' 4"			37.60m		
Clearance Under Course				9' 0"			2.75m		
Top of Steel Height				36' 0"			10.98m		

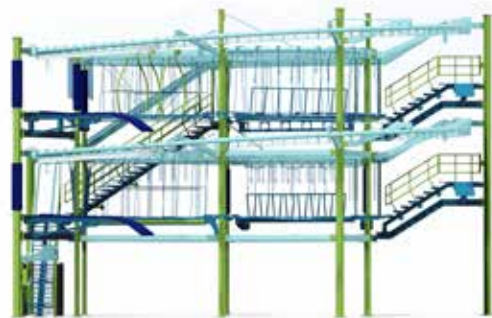
*Note: Sky Trail® layout and color scheme can vary based on client and site specific needs.

SKY TRAIL®

7 POLE 2 LEVEL WITH (2) 120° SKY RAILS®



PLAN



ELEVATION

DATA TABLE

7 Pole 2 Level Sky Trail® with (2) 120° Sky Rails®

# of Elements	Instant Capacity	Capacity Per Hour	Approx. Dwell Time	Imperial (ft/in)			Metric (m)		
				Length	Width	Area	Length	Width	Area
24	60	80	45	65' 1"	60' 2"	3917 ft ²	19.84m	18.34m	364m ²
Unique Sky Rail® Lengths				85' 6"			26.06m		
Clearance Under Course				9' 0"			2.75m		
Top of Steel Height				36' 0"			10.98m		

*Note: Sky Trail® layout and color scheme can vary based on client and site specific needs.



OVERVIEW

SKY TRAIL

SKY TYKES

SKY RAIL

SKY TOUR

CLIP 'N CLIMB

ADVENTURE TRAIL

ADVENTURE TYKES

DESTINATION

AMAZE'N MAZES

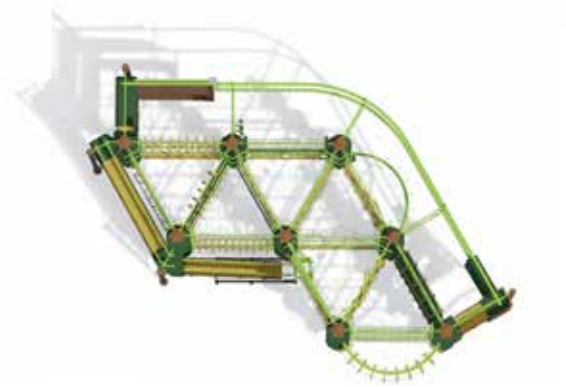
2 LEVEL SKY TRAIL®

This 2 level Sky Trail® in Allegan, MI, boasts a whopping capacity of 110 participants at one time. It is decked out with features like a Walk The Plank, a Roller Rail, Curved Weave Walk, and two Sky Rails®, one of which spans the length of the building! This well rounded facility is also home to a Sky Tykes®, 18 Clip'n Climb® challenges, and an Amaze'n Maze. There is no end to the fun!



SKY TRAIL®

8 POLE 3 LEVEL WITH 60° SKY RAILS®



PLAN



ELEVATION

DATA TABLE

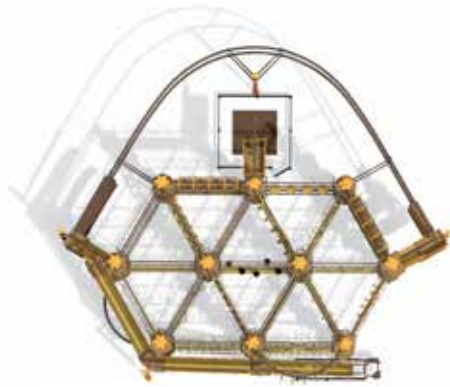
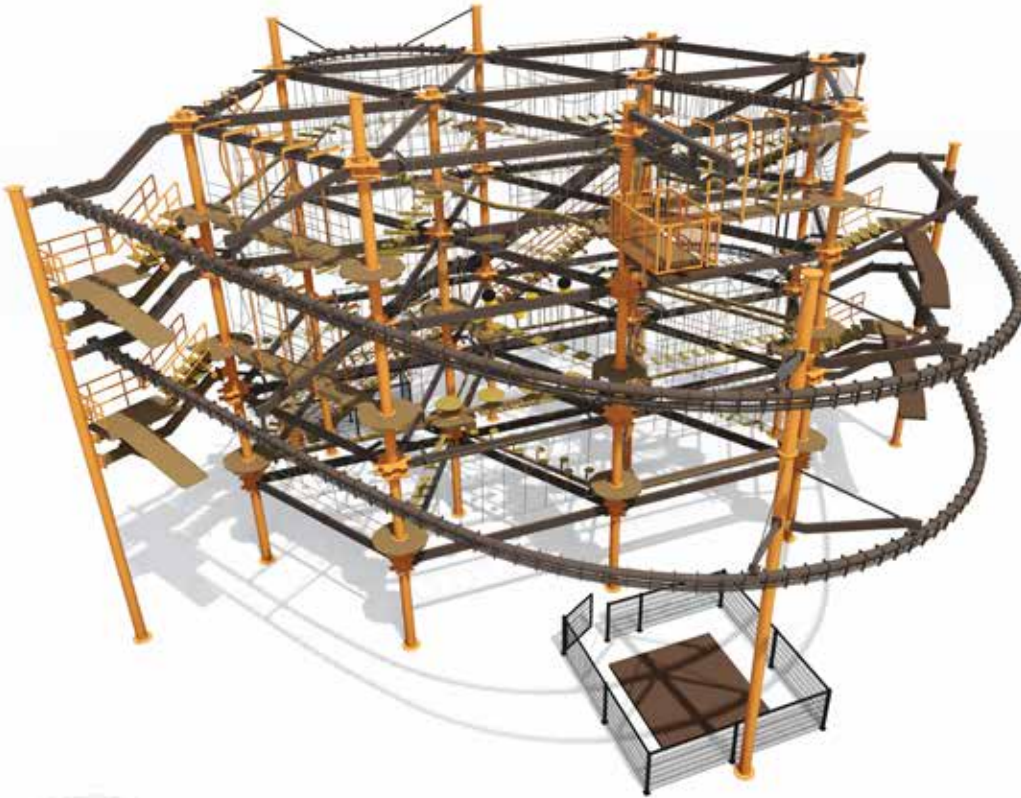
8 Pole 3 Level Sky Trail® with (2) 60° Sky Rails®

# of Elements	Instant Capacity	Capacity Per Hour	Approx. Dwell Time	Imperial (ft/in)			Metric (m)		
				Length	Width	Area	Length	Width	Area
39	80	107	45	80' 3"	58' 6"	4704 ft ²	24.46m	17.83m	437m ²
Unique Sky Rail® Lengths				90' 5"			27.56m		
Clearance Under Course				9' 0"			2.75m		
Top of Steel Height				48' 0"			14.63m		

*Note: Sky Trail® layout and color scheme can vary based on client and site specific needs.

SKY TRAIL®

10 POLE 3 LEVEL WITH 120° SKY RAILS®



PLAN



ELEVATION

DATA TABLE

10 Pole 3 Level Sky Trail® with (2) 120° Sky Rails®

# of Elements	Instant Capacity	Capacity Per Hour	Approx. Dwell Time	Imperial (ft/in)			Metric (m)		
				Length	Width	Area	Length	Width	Area
56	105	140	45	85' 11"	73' 9"	6340 ft ²	26.17m	22.48m	589m ²
Unique Sky Rail® Lengths				121' 4"			36.99m		
Clearance Under Course				9' 0"			2.75m		
Top of Steel Height				48' 0"			14.63m		

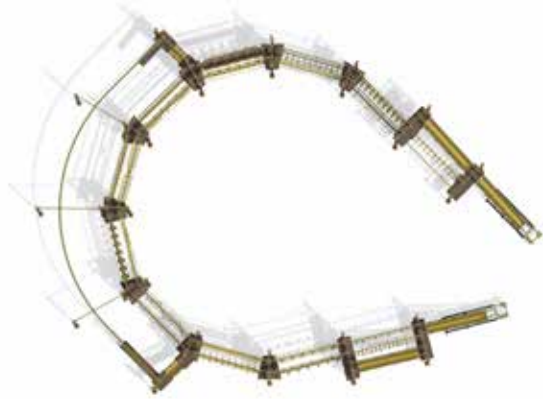
*Note: Sky Trail® layout and color scheme can vary based on client and site specific needs.

3+ LEVEL SKY TRAIL®

The folks at Big Cedar Lodge in the beautiful Ozark Mountain city of Branson, MO, chose to elevate their 3-level Sky Trail® on a large platform to maximize the view of the landscape and visibility of the course. With a capacity of 55 participants at one time, two 92-foot long Sky Rails® and a Sky Tykes® for those under 48 inches, there is no end to the fun!

SKY TRAIL®

24 POLE 2 LEVEL WITH 60° SKY RAIL® - LINEAR



PLAN



ELEVATION

DATA TABLE

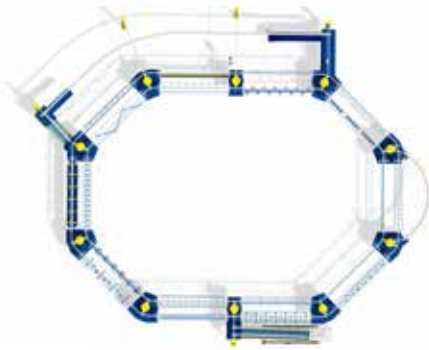
24 Pole 2 Level Linear Sky Trail® with (1) 60° Sky Rail®

# of Elements	Instant Capacity	Capacity Per Hour	Imperial (ft/in)			Metric (m)		
			Length	Width	Area	Length	Width	Area
39	75	240	149' 3"	106' 1"	15,839 ft ²	45.50m	32.34m	1,472m ²
Unique Sky Rail® Lengths			120' 9"			36.81m		
Clearance Under Course			9' 0"			2.75m		
Top of Steel Height			32' 1"			9.78m		

*Note: Sky Trail® layout and color scheme can vary based on client and site specific needs.

SKY TRAIL®

10 POLE 1 LEVEL WITH 45° SKY RAIL® - LINEAR



PLAN



ELEVATION

DATA TABLE

10 Pole 1 Level Linear Sky Trail® with (1) 45° Sky Rail®

# of Elements	Instant Capacity	Capacity Per Hour	Imperial (ft/in)			Metric (m)		
			Length	Width	Area	Length	Width	Area
20	30	120	107' 8"	90' 10"	9782 ft ²	32.82m	27.69m	909m ²
Unique Sky Rail® Lengths			84' 3"			25.68m		
Clearance Under Course			9' 0"			2.75m		
Top of Steel Height			24' 7"			7.50m		

*Note: Sky Trail® layout and color scheme can vary based on client and site specific needs.



LINEAR SKY TRAIL®

This 24 pole, 2-level linear Sky Trail® located in Namwon City, South Korea, pairs thrill-seeking adventure with a magnificent view. With a throughput of 360 participants per hour, it's a great choice for high foot traffic adventure and recreational parks.

OVERVIEW

SKY TRAIL

SKY TYKES

SKY RAIL

SKY TOUR

CLIP 'N CLIMB

ADVENTURE TRAIL

ADVENTURE TYKES

DESTINATION

AMAZIN' MAZES

EXPANSION ELEMENTS

We have an abundant variety of customizable features that can be added to further modify your Sky Trail® and deliver a memorable adventure-filled experience to guests of all ages.



WALK THE PLANK

This narrow stand-alone beam sets the stage for a daring walk to give guests an exhilarating experience. Consider a tippy version that involves the plank slightly tipping forward to elicit a rush for participants.



SINGLE POLE

Like our curved elements, single pole elements help to maximize an existing Sky Trail® footprint by utilizing an existing pole. Participants can navigate their way around the floating ring, high above onlookers.



QUICKFLIGHT

The QuickFlight free-fall device offers an alternative yet exhilarating exit from the very peak of the Sky Trail®. This attraction allows for the thrilling sensation of a free fall, but with the added safety of an auto belay device.



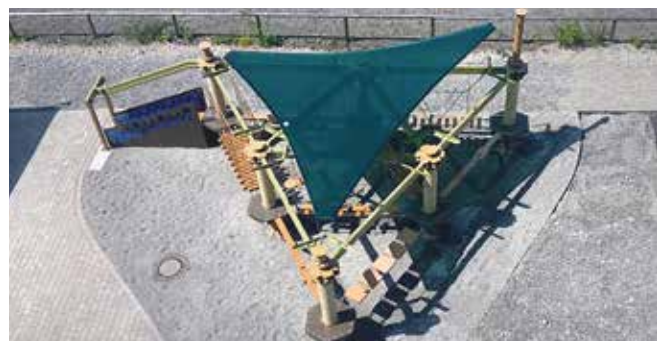
CURVED ELEMENTS

Take advantage of your course's existing footprint and maximize the element layout with a curved element. Elements like the curved roller rail are often installed around the course's parameter.



SKY RAIL®

Sky Rail® is the ultimate expansion element and available in a variety of configurations including straight, curved and side-by-side. With its high throughput, this will quickly be your most popular course element.

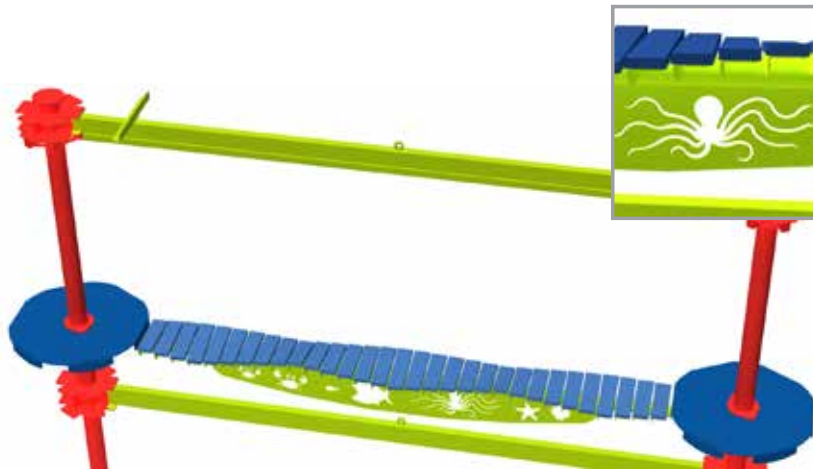


SUN SHADES

Attractions dominated by sunlight or lots of rain greatly benefit from the addition of sun or rain shades so participants as well as operators don't have to endure prolonged periods of harsh weather conditions.

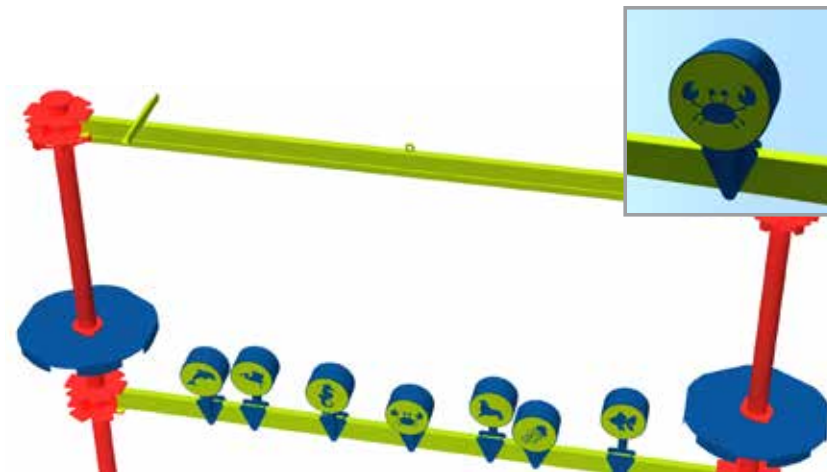
THEMED ELEMENTS

Add your company logo, mascot or theme to one of the 9 custom themed elements: bridge, stepping stones, steel lily pads, rope lily pads, weave walk, ledge walk, rope swings, color wheel and tippy plank. The integration of a personal mark on elements further establishes ownership and keeps the company on the minds of guests as they navigate the attraction.



THEMED BRIDGE

THEMED STEPPING STONES



THEMED LEDGE WALK

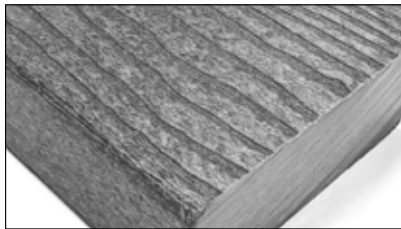
COLORS & SCHEMES

Select three colors from the swatches below for your horizontal, vertical, and platform color options OR select one of the premade color schemes created by our design team. Colors shown are available for use on Sky Trail®, Sky Tykes® and Sky Rail® attractions.

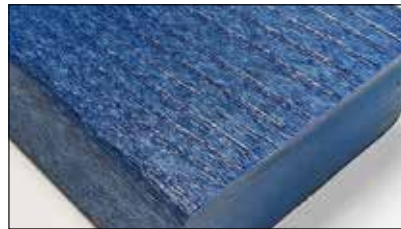


STANDARD COLOR OPTIONS

Plumber



GRAY



BLUE



CEDAR

Rope

exact rope color may vary



BROWN



TAN



BLUE

Slingline



ORANGE

REQUIRED FOR OPERATORS



BROWN



BLUE



SKY TRAIL® ON THE HIGH SEAS

Did you know that RCI Adventure Products has designed, manufactured and installed Sky Trail® courses on nearly 30 cruise ships worldwide? That number continues to grow every year as the cruise industry looks to better connect with families and younger generations. RCI is a part of a growing attractions market with products specifically designed to hold up to the challenging ocean environment.



Sky Tykes®

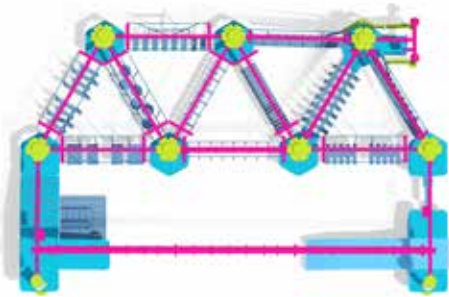
Catering to the pint-sized adventure seekers under 4' (1.2m) tall, Sky Tykes® utilizes the same specially engineered technology as Sky Trail® but shrinks elements to proportionally fit children. A safety track tailored to a smaller size keeps the little visitors feeling secure while introducing them to an adventurous experience. Guardians get to stand-back and watch as they unleash their imagination!

FEATURES & BENEFITS

- + **High profitability:** U.S. businesses typically charge \$5-7 per participant and participants stay on attraction for an average of 15-30 minutes
- + **Secure & dependable:** Utilizes U.S. patented overhead tracking system and time-tested safety equipment
- + **Low operation costs:** 1 operator recommended
- + **Minimal maintenance:** Engineered with durable materials designed to withstand weather and high use
- + **Unique entertainment:** Visually commanding and not common on most playgrounds
- + **Promotes exercise:** Offers a healthy and engaging activity for kids

SKY TYKES®

7 POLE WITH SKY RAIL®



PLAN



ELEVATION

DATA TABLE

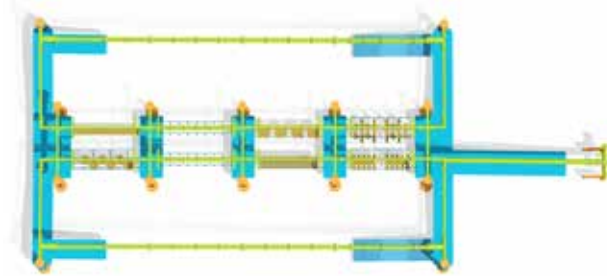
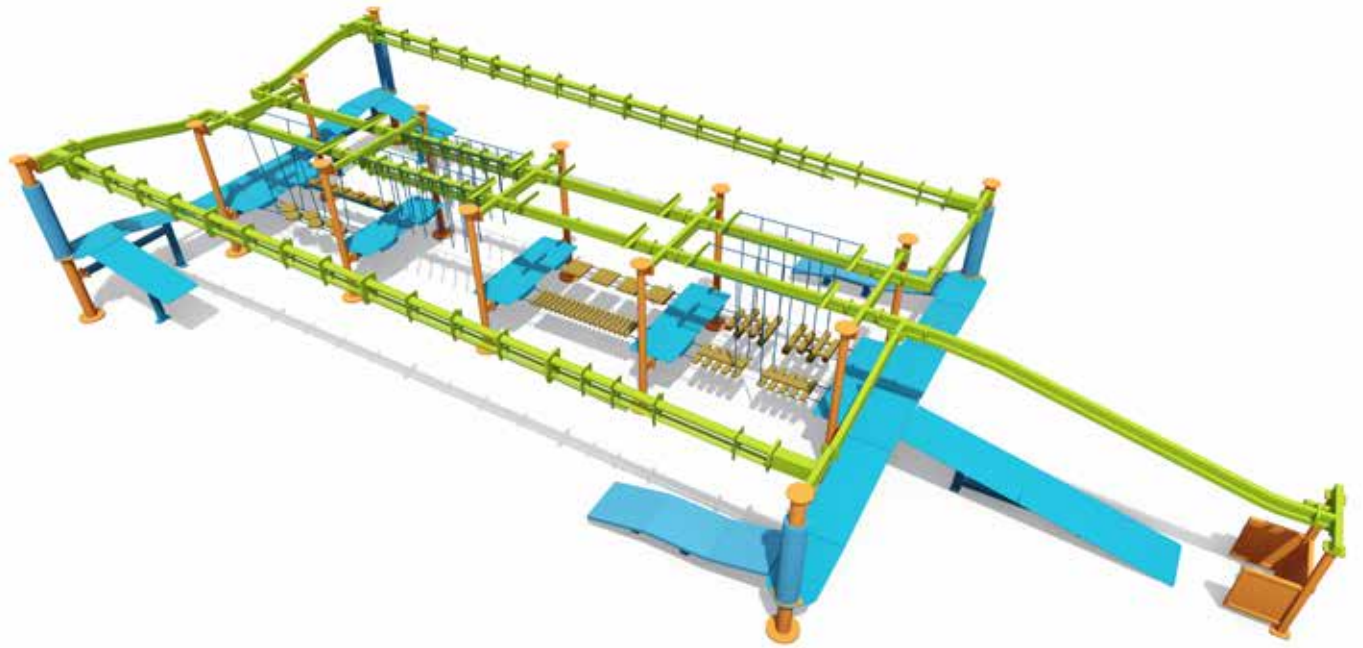
7 Pole Sky Tykes® with (1) Sky Rail®

# of Elements	Instant Capacity	Capacity Per Hour	Approx. Dwell Time	Imperial (ft/in)			Metric (m)		
				Length	Width	Area	Length	Width	Area
11	15	60	15	40' 0"	25' 11"	1038 ft ²	12.20m	7.90m	97m ²
Unique Sky Rail® Lengths				30' 0"			9.15m		
Top of Steel Height				9' 7"			2.92m		

*Note: Sky Tykes® layout and color scheme can vary based on client and site specific needs.

SKY TYKES®

10 POLE WITH SKY RAILS® - LINEAR



PLAN



ELEVATION

DATA TABLE

10 Pole Linear Sky Tykes® with (2) Sky Rails®

# of Elements	Instant Capacity	Capacity Per Hour	Approx. Dwell Time	Imperial (ft/in)			Metric (m)		
				Length	Width	Area	Length	Width	Area
8	20	60	20	64' 5"	31' 7"	2036 ft ²	19.64m	9.63m	190m ²
Unique Sky Rail® Lengths				40' 0"			12.20m		
Top of Steel Height				9' 5"			2.87m		

*Note: Sky Tykes® layout and color scheme can vary based on client and site specific needs.



AMAZEN MAZES™ DESTINATION ADVENTURE TYKES™ ADVENTURE TRAIL® CLIP 'N CLIMB® SKY TOUR SKY RAIL SKY TRAIL OVERVIEW

SKY TYKES® ATTRACTION

Designed for smaller children who may still be a bit intimidated by the larger Sky Trail® and are 4ft (1.2m) tall or under, this 6 pole Sky Tykes® at the Island in Pigeon Forge gently eases participants into the adventurous world of RCI adventure products.



Sky Rail®

Looking to add extra fun to your Sky Trail® or Sky Tykes® attraction? One of 4 distinct Sky Rail® track models can be incorporated depending on a client's needs and space allowance. For a smooth ride and enhanced safety, each easy to use Sky Rail® is equipped with an in-line decelerator system to ease participants into a gentle landing so that they can continue on in their adventure.

FEATURES & BENEFITS

- + **Choose your type:** A rail is a standard feature on all Sky Trail® attractions as either a Sky Rail® or a roller rail element
- + **High throughput:** Mechanical Sky Rail® averages 120 participants per hour with 1 staff person with each riding 3-4 times per visit
- + **Low operator requirements:** Only 1 operator required for 1+ electronic Sky Rails®. The operator shows participants how to ride the 1st rail and then participants are good to go

2 TYPES OF DECELERATORS

MECHANICAL

A mechanical Sky Rail® is equipped with a decelerator which uses magnetic eddy currents to slow participants before landing. A trained operator is required at the Sky Rail® take off platform to instruct and facilitate the loading of participants to enter the Sky Rail® track.

ELECTRICAL

An electronic Sky Rail® is equipped with an electronic decelerator which uses a series of electronic sensors, gates and magnetic eddy currents to operate. This decelerator system requires a 120v 10amp electrical connection at the base of the Sky Rail® column. A participant cannot enter the Sky Rail® until the previous participant is clear and the electronic system resets itself.



STRAIGHT SKY RAIL®

Capable of being added to a Sky Tykes® or a Sky Trail® of any level, the straight track Sky Rail® provides participants with a smooth, direct ride from one end of the attraction to the other. Whether multiple are installed or just one, this traditional model is designed to give anyone who chooses to ride a feeling and experience they'll want to repeat.



CURVED SKY RAIL®

The curved Sky Rail® track allows for a longer ride in a smaller amount of space and gives participants a unique twist when compared to a ride on a similar attraction. An ideal choice for facilities with limited space allowance that still want to maximize the experience for guests of all ages.



180-DEGREE SKY RAIL®

The 180° Sky Rail® has two immediate benefits. First, and like the curved rail, it can more than double ride length on courses with limited space. Second, it gives a Sky Trail® that "wow" factor. Participants are immediately drawn to the 180° Sky Rail® and often take multiple rides around it!



SIDE-BY-SIDE SKY RAIL®

Presented as two straight Sky Rails® configured in a parallel fashion, this double value option gives participants the chance to glide by one another in tandem as they each make it to the other side. Perfect for those wanting to channel their competitive spirit or individuals eager to take a smooth ride above guests below, this model is sure to stand out at your facility.





DUALING 180° SKY RAIL® ATTRACTION

The Twisted Trails Zip Rails and Ropes Course at the Natural Bridge Cavern, just outside of San Antonio, features one of RCI's more unique Sky Rail® designs, with two stacked 180° rails, each measuring approximately 125 feet in length. The configuration options for Sky Rail® are only limited by available space and imagination!

OVERVIEW

SKY TRAIL®

SKY TYKES®

SKY RAIL®

SKY TOUR®

CLIP 'N CLIMB®

ADVENTURE TRAIL®

ADVENTURE TYKES™

DESTINATION

AMAZEN MAZES™



OVERVIEW

SKY TRAIL

SKY TYKES

SKY RAIL

SKY TOUR

CLIP 'N CLIMB

ADVENTURE TRAIL

ADVENTURE TYKES

DESTINATION

AMAZIN MAZES

R·Sky Tour®

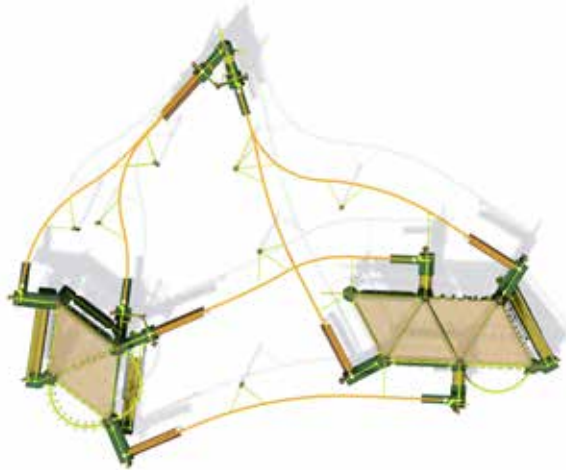
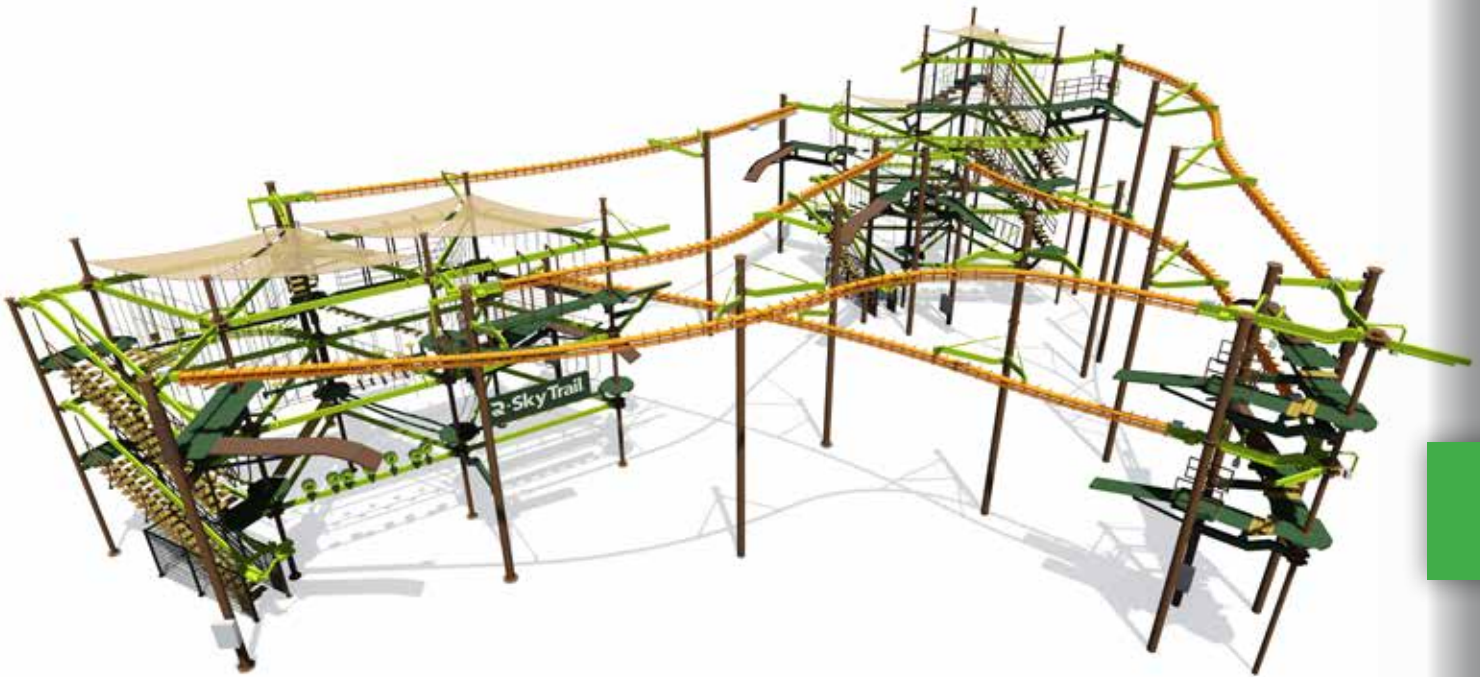
Take your Sky Trail® course to the next level with the addition of our Sky Tour®, a thrilling canopy excursion that can traverse buildings, attractions, water features, green spaces and more. Guests can zip around on a self-guided adventure, getting a birds-eye view of your property and the surrounding area. Sky Tour® is a perfect extension as it integrates seamlessly with a Sky Trail® and can give you an additional attraction to market to guests. All rails are computer controlled keeping guests safe and minimizing staffing requirements.

FEATURES & BENEFITS

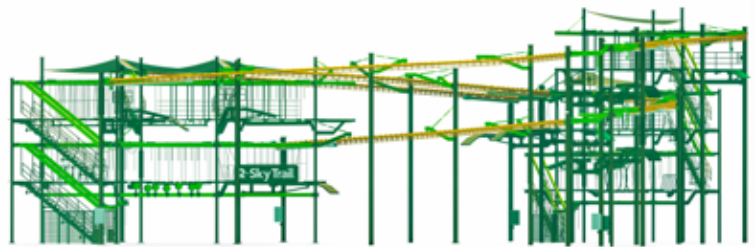
- + **Completely customized:** The Sky Tour® will be designed to maximize the property's square footage and available footprint.
- + **High throughput:** Computer-controlled so guests are kept moving through the set of rails safely and efficiently.
- + **Low operator requirements:** Only 1 operator required, typically there to show participants how to ride the first rail. From then on, participants are good to go at their own pace.
- + **New revenue source:** Add-on attraction to Sky Trail® with shared or separate entrance .

SKY TOUR®

10 POLE 3 LEVEL SKY TRAIL® WITH 6 RAIL SKY TOUR®



PLAN



ELEVATION

DATA TABLE

10 POLE 3 LEVEL SKY TRAIL® WITH 6 RAIL SKY TOUR®

# of Sky Rails®	Instant Capacity	Capacity Per Hour	Approx. Dwell Time	Imperial (ft/in)			Metric (m)		
				Length	Width	Area	Length	Width	Area
6	30	240	45	139'9"	129'5"	18086ft ²	42.60	39.45	1681m ²
Unique Sky Rail® Lengths				76'0" / 89'6" / 90'7" / 93'6" / 97'2" / 98'0"			23.17m / 27.28m / 27.61m / 28.50m / 29.62m / 29.88m		
Clearance Under Course				9'0"			2.75m		

* Date table only includes information on Sky Tour®, not the connected Sky Trail® course
 Note: Sky Tour® course layout customized to customer's property footprint



OVERVIEW

SKY TRAIL

SKY TYKES

SKY RAIL

SKY TOUR

CLIP 'N CLIMB

ADVENTURE TRAIL

ADVENTURE TYKES

DESTINATION

AMAZIN' MAZES

SKYLARK RIDGE

Charles & Lynn Zhang

THE SKYRIDER'S PARADISE

THE SKYRIDER'S PARADISE

2 Sky Rail

2 Sky Rail



AMAZIN' MAZES™ DESTINATION ADVENTURE TYKES™ ADVENTURE TRAIL CLIP 'N CLIMB® SKY TOUR® SKY TRAIL SKY TYKES® SKY RAIL OVERVIEW

SKY TOUR® AT THE ZOO

The brand new Skylark Ridge course at Binder Park Zoo in Battle Creek includes a 3-level Sky Trail® course with a four-rail Sky Tour®. Each Sky Tour® curved rail is approximately 100-feet long and allows guests to zip back-and-forth from the Sky Trail® course. Binder Park Zoo added this attraction in 2022 as a way of building onto the guest experience and connecting with guests of all ages.



clip 'n climb®

A fresh take on the world of traditional climbing, Clip 'n Climb® provides visitors with a plethora of vertical activities all ranging in difficulty and each offering a unique experience. The inventive climbing challenges appeal to children as well as adults looking for a day of amusement. Merging Clip 'n Climb® with a Sky Trail® aerial attraction creates the perfect playful environment for all ages. The 2 attractions combined utilize the same safety equipment and offer numerous elements to climb onto and explore resulting in an ideal adventure-filled experience.

FEATURES & BENEFITS

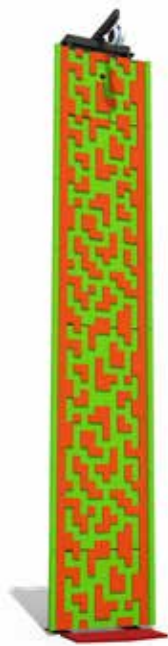
- + **Safe & reliable:** Utilizes TRUBLUE auto belays and Self Belay connectors; the most tested and trusted climbing wall safety equipment solutions
- + **Low labor cost:** Under certain scenarios a 1:12 ratio of operator to participant is achievable
- + **Ease of operation:** Participants use the same safety harnesses used on the Sky Trail®
- + **Visually attractive:** Spectators will gather to watch participants on colorful walls which becomes a valuable source of additional income
- + **All skill levels:** Large variety of challenges to select from that range in difficulty to appeal to both beginners and climbing enthusiasts

STANDARD CHALLENGES

 SUITABLE FOR OUTDOORS



ALIENS



AMAZING



BIG CHEESE



CHECKERPLATE



CIRCUIT BREAKER



CLOUD 9



DETONATOR



DIAMONDS

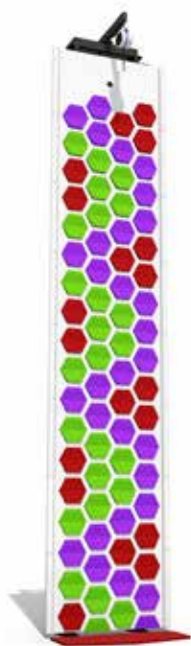


*Note: If color changes to challenges are desired, ask for further information. Gradually rising red bars indicate the overall difficulty of each climbing wall. One bar equals the easiest walls while a max five bars refers to the most difficult.

STANDARD CHALLENGES

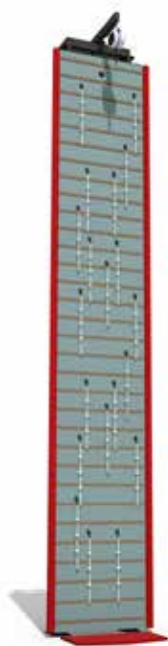


SUITABLE FOR OUTDOORS



Wide Challenge

HEXED



JUNGLE VINES



MORSE CODE



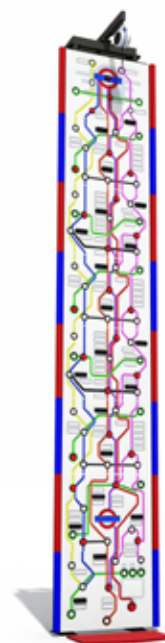
PIXETRON



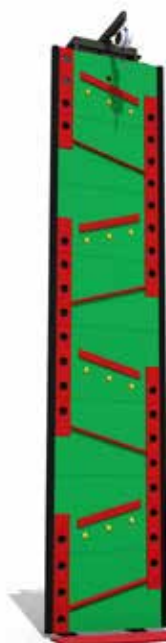
RED SQUARE



SPEED CLIMB



TIME TRAVELER



Wide Challenge
ZIGG ZAGG



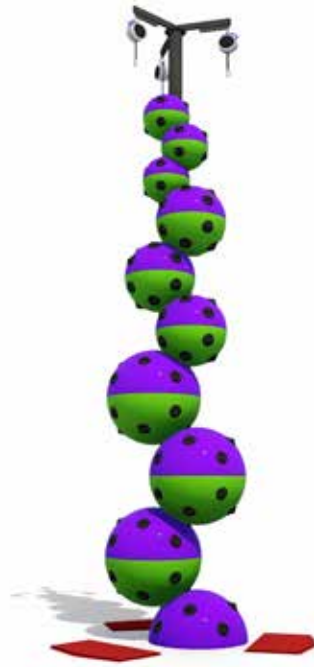
*Note: If color changes to challenges are desired, ask for further information. Gradually rising red bars indicate the overall difficulty of each climbing wall. One bar equals the easiest walls while a max five bars refers to the most difficult.

PREMIUM CHALLENGES

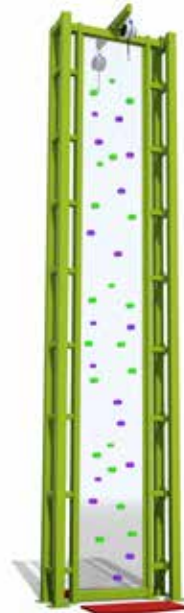
 SUITABLE FOR OUTDOORS



ASCENDOR



ASTROBALL



FACE TO FACE



TWISTER



TREE TRUNK



CAVING LADDER



JUNGLE GYM



*Note: If color changes to challenges are desired, ask for further information. Gradually rising red bars indicate the overall difficulty of each climbing wall. One bar equals the easiest walls while a max five bars refers to the most difficult.

CUSTOM THEMED CHALLENGES

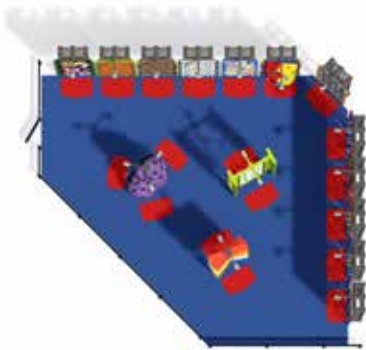
Customizing challenges is a great way to expand your theme or brand throughout your facility.



**Note: If color changes to challenges are desired, ask for further information.*

CLIP 'N CLIMB®

15 CHALLENGES



PLAN

ELEVATION

DATA TABLE

15 Clip 'n Climb® Challenges

# of Panels	Instant Capacity	Capacity Per Hour	Approx. Dwell Time	Imperial (ft/in)			Metric (m)		
				Length	Width	Area	Length	Width	Area
6	19	57	20	48' 6"	42' 10"	2089 ft ²	14.79m	13.06m	194m ²
Panel Height				4' 0"			1.22m		
Top of Steel Height				25' 7"			7.80m		

*Note: If color changes to challenges are desired, ask for further information.

OVERVIEW

SKY TRAIL

SKY TYKES

SKY RAIL

SKY TOUR

CLIP 'N CLIMB

ADVENTURE TRAIL

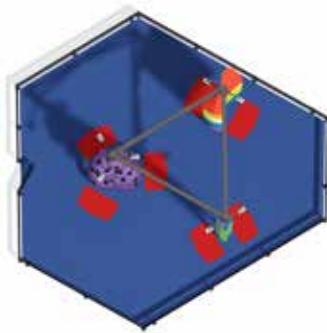
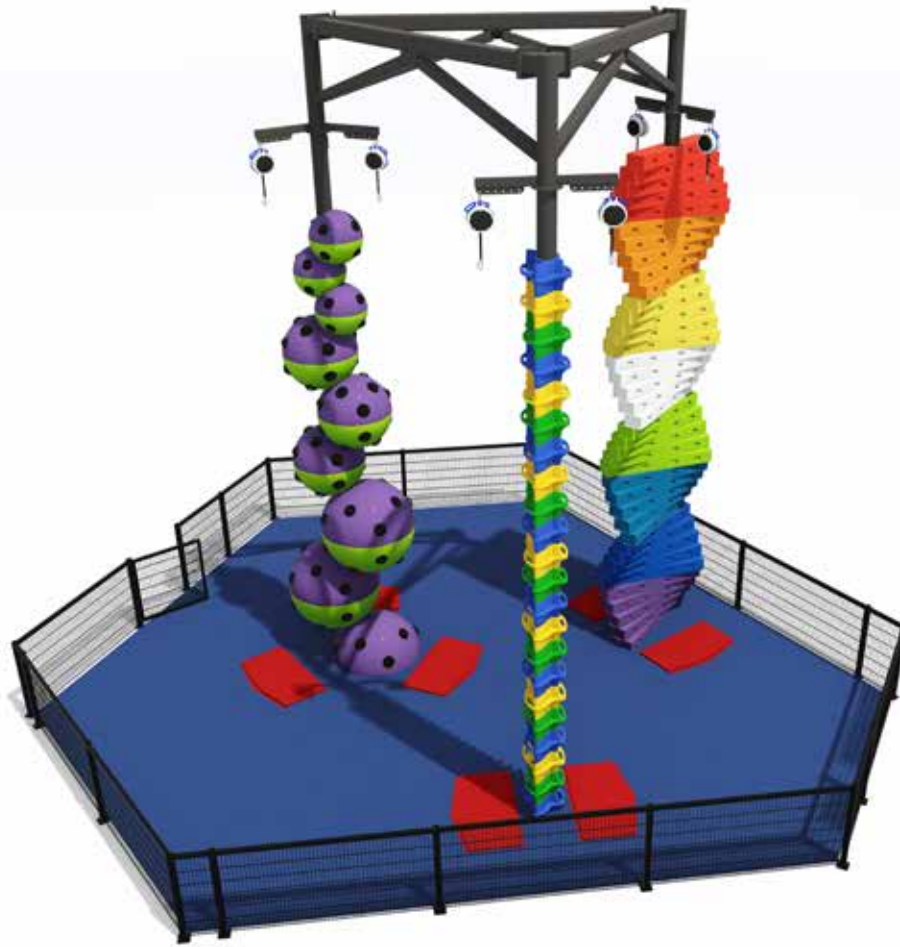
ADVENTURE TYKES

DESTINATION

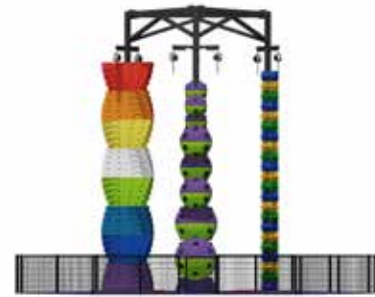
AMAZE 'N MAZES

CLIP 'N CLIMB®

DELTA



PLAN



ELEVATION

DATA TABLE

3 Clip 'n Climb® Challenges

# of Panels	Instant Capacity	Capacity Per Hour	Approx. Dwell Time	Imperial (ft/in)			Metric (m)		
				Length	Width	Area	Length	Width	Area
7	7	28	15	40' 11"	40' 3"	1658 ft2	12.48m	12.27m	154m2
Panel Height				4' 0"			1.22m		
Top of Steel Height				32' 3"			9.83m		

*Note: Additional challenge options available. Each challenge comes in 5-8 panels to accommodate varying ceiling heights.



CLIP 'N CLIMB® ATTRACTION

This multi-challenge configuration designed for EVO Entertainment in Southlake, TX, is able to accommodate 6 climbers at once. All ages and skill levels are encouraged to join in on the fun!

OVERVIEW

SKY TRAIL®

SKY TYKES®

SKY RAIL®

SKY TOUR®

CLIP 'N CLIMB®

ADVENTURE TRAIL®

ADVENTURE TYKES™

DESTINATION

AMAZEN MAZES™



Adventure Trail®

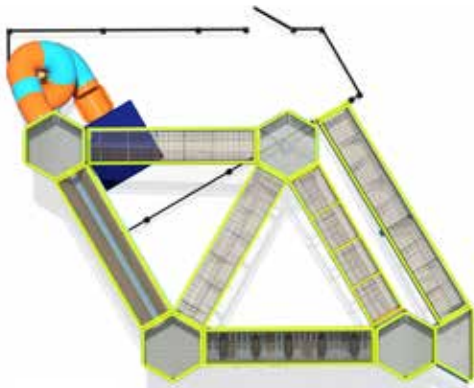
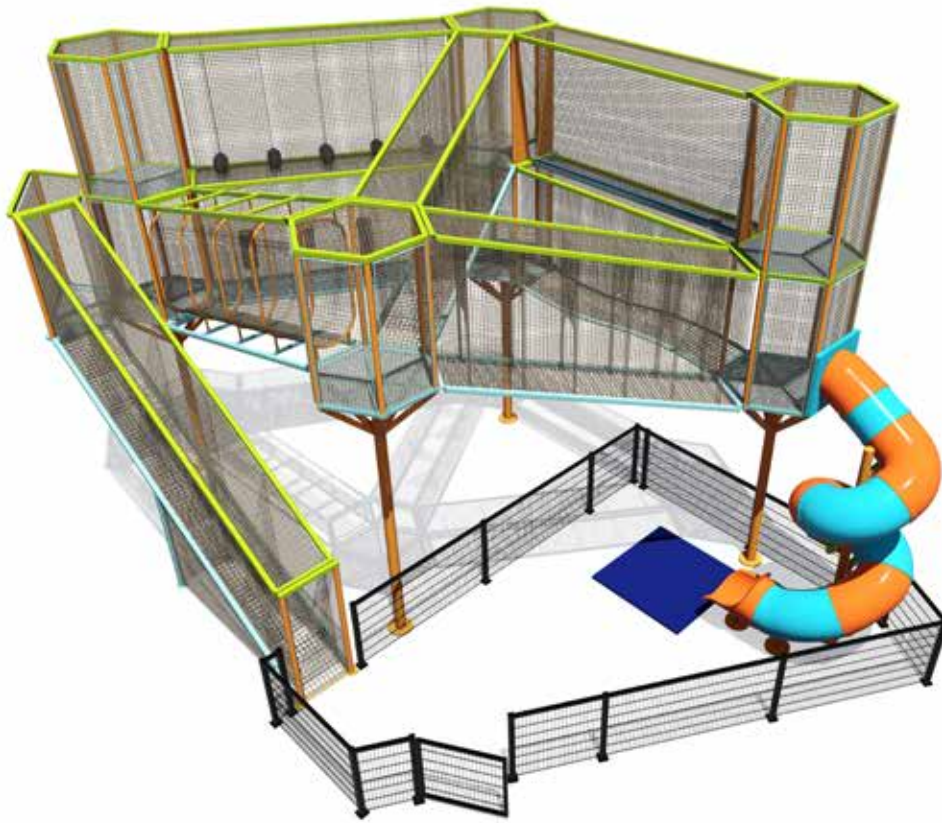
Adventure Trail is designed with exploration for the entire family in mind as the elevated towers, rope bridges, other assorted climbing activities and slides create a semi-contained world in which imagination knows no boundaries. The multi-level unharnessed play experience engages participants of all ages both physically and mentally as those traversing must navigate through the arranged pathways in order to meet up with others or discover additional ways in which they'd like to explore. The integration of slides into the Adventure Trail product gives participants a thrilling method by which they can exit the attraction and either return to onlooking family members or engage in another activity.

FEATURES & BENEFITS

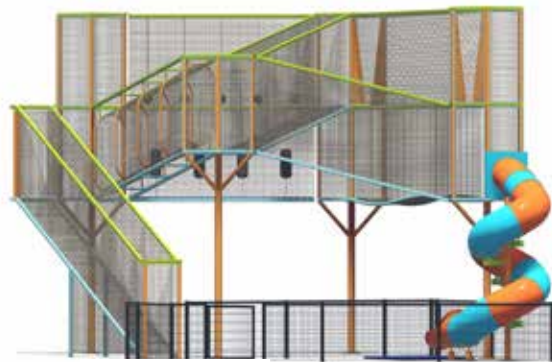
- + **Doubled capacity:** Maximizing your site using the vertical height space, in turn, allows for more room to accommodate participants
- + **Custom designs:** All designs are tailored to specific site and budgetary requirements
- + **Versatile:** Indoor and outdoor configurations can be made to suit any budget and site layout
- + **Flexible integration:** Branded or IP theming allow the attraction to complement any space
- + **Enhanced views:** The elevated nature of Adventure Trail gives guests a unique bird's eye view of your park
- + **Low operator costs:** Minimal staffing is required to monitor the Adventure Trail® course

ADVENTURE TRAIL®

4 TOWERS



PLAN



ELEVATION

DATA TABLE

4 Tower Adventure Trail

# of Elements	Instant Capacity	Capacity Per Hour	Approx. Dwell Time	Imperial (ft/in)			Metric (m)		
				Length	Width	Area	Length	Width	Area
7	35	105	20	41'1"	31'8"	1301 ft ²	12.53 m	9.66 m	121 m ²
Clearance Under Course				10'0"			3.04 m		
Top of Steel Height				26'3"			8.00 m		

*Note: Pole configuration may be modified based on client and site specific needs. Additional poles, net elements, access points and slides are available.



OVERVIEW

SKY TRAIL

SKY TYKES

SKY RAIL

SKY TOUR

CLIP 'N CLIMB

ADVENTURE TRAIL

ADVENTURE TYKES

DESTINATION

AMAZIN' MAZES

ADVENTURE TRAIL[®] AT WALDORF ASTORIA

On the shores of the Persian Gulf in Doha, Qatar, is the Waldorf Astoria Lusail, home to our net-play Adventure Trail[®]. Customers seeking a low labor, low maintenance, but high capacity attraction enjoy the many configuration and design options of our Adventure Trail[®].



OVERVIEW

SKY TRAIL™

SKY TYKES™

SKY RAIL™

SKY TOUR™

CLIP 'N CLIMB™

ADVENTURE TRAIL™

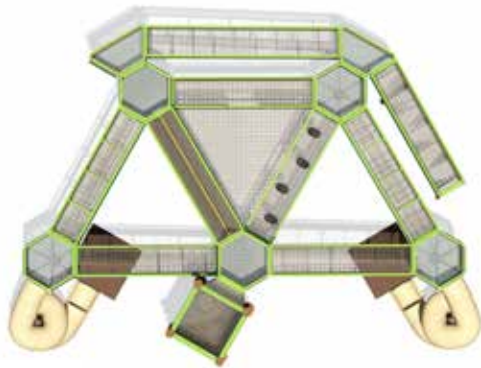
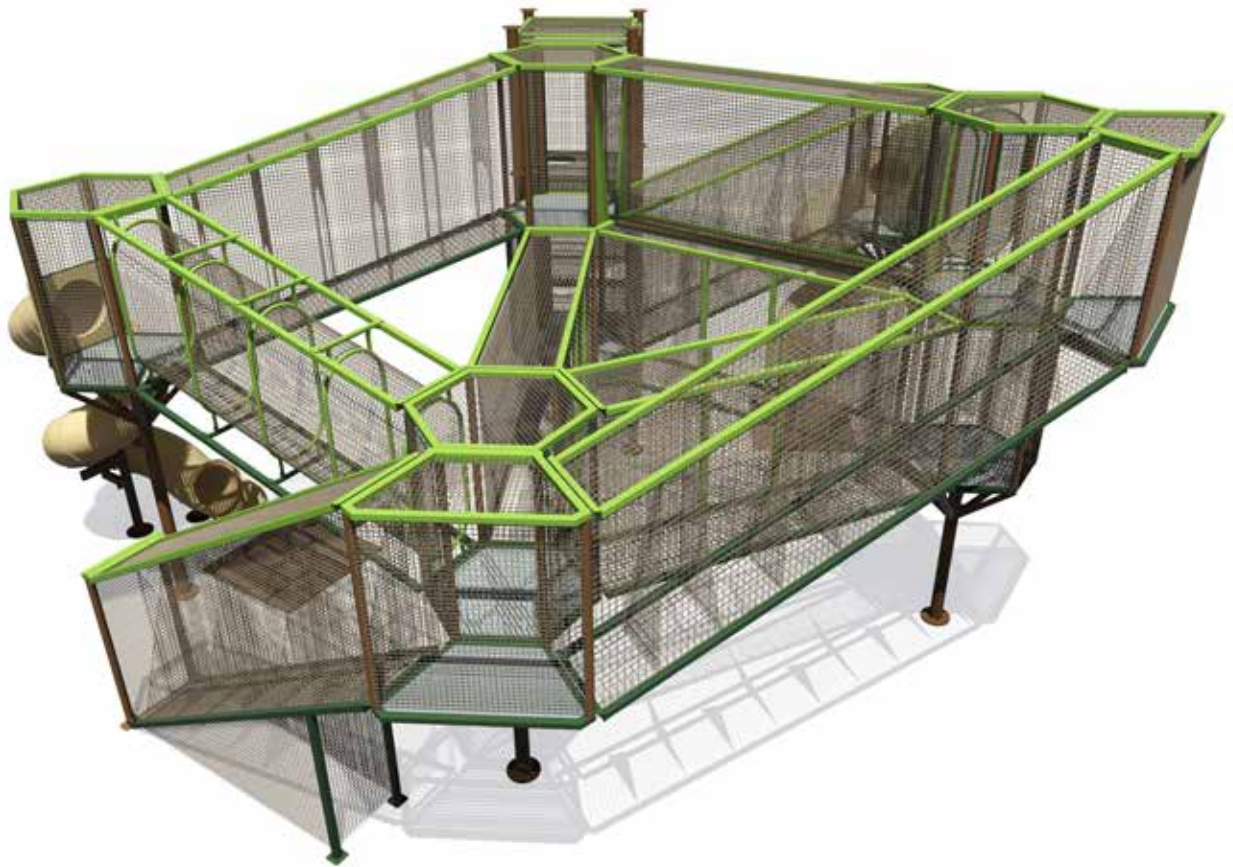
ADVENTURE TYKES™

DESTINATION

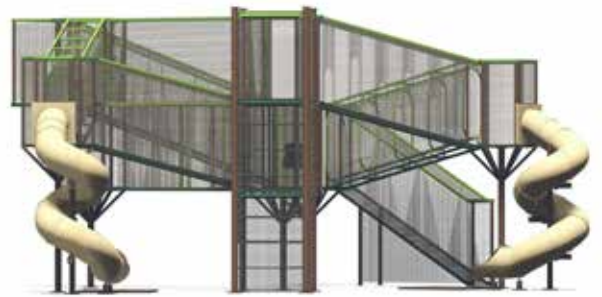
AMAZE'N MAZES™

ADVENTURE TRAIL®

5 TOWERS



PLAN



ELEVATION

DATA TABLE

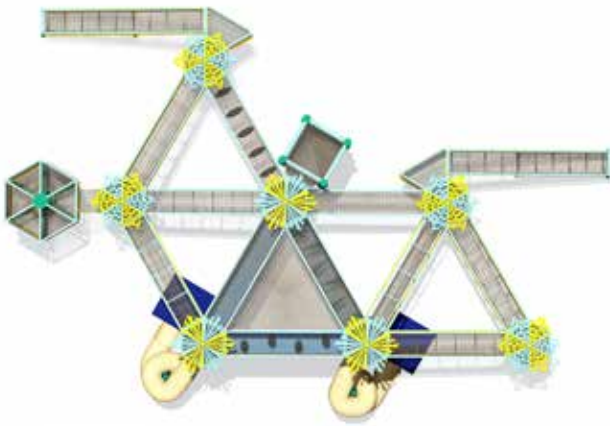
5 Tower Adventure Trail®

# of Elements	Instant Capacity	Capacity Per Hour	Approx. Dwell Time	Imperial (ft/in)			Metric (m)		
				Length	Width	Area	Length	Width	Area
8	55	165	20	49'1"	35'0"	1718 ft ²	14.97 m	10.67 m	160 m ²
Clearance Under Course				7'0"			2.13 m		
Top of Steel Height				23'2"			7.06 m		

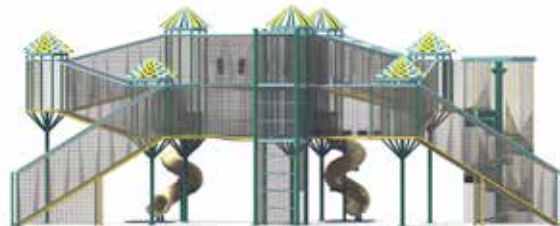
*Note: Pole configuration may be modified based on client and site specific needs. Additional poles, net elements, access points and slides are available.

ADVENTURE TRAIL®

7 TOWERS



PLAN



ELEVATION

DATA TABLE

7 Tower Adventure Trail®

# of Elements	Instant Capacity	Capacity Per Hour	Approx. Dwell Time	Imperial (ft/in)			Metric (m)		
				Length	Width	Area	Length	Width	Area
14	85	170	30	75'6"	50'10"	3838 ft ²	23.02 m	15.50 m	357 m ²
Clearance Under Course				10' 0"			3.04 m		
Top of Steel Height				29'11"			9.11 m		

*Note: Pole configuration may be modified based on client and site specific needs. Additional poles, net elements, access points and slides are available.

BRIDGE STYLES

To customize your unharnessed netplay experience, choose from a collection of distinct bridge types to challenge participants in new ways. All styles whether it be the more narrow V-Bridge or the bumpy Wave-Bridge, are constructed using tightly woven rope and are fully capable of withstanding high amounts of foot traffic thanks to durable materials.





OVERVIEW

SKY TRAIL®

SKY TYKES®

SKY RAIL®

SKY TOUR®

CLIP 'N CLIMB®

ADVENTURE TRAIL®

ADVENTURE TYKES™

DESTINATION

AMAZIN' MAZES™



Adventure Tykes™

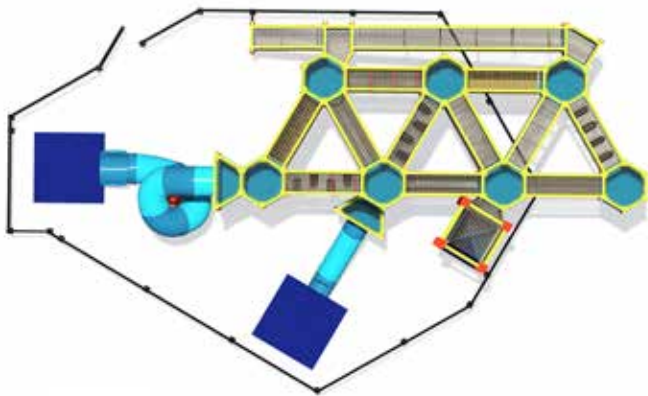
Welcome to the all new Adventure Tykes™ play experience! Designed for our littlest adventure seekers, Adventure Tykes™ is an unharnessed, net-play course that includes challenging ropes, beam and bridge elements, similar to our Sky Trail® course. This high capacity, high throughput attraction requires minimal staffing and can be installed over an existing Sky Tykes® course, utilizing the same pole layout, allowing you to further maximize square footage. Adventure Tykes™ designs offer different entrance/exit options and slide designs.

FEATURES & BENEFITS

- + **Doubled capacity:** For customers with a Sky Tykes® course, Adventure Tykes™ can be built utilizing the same poles and, virtually, the same footprint.
- + **Low operator costs:** Minimal staffing is required.
- + **Custom designs:** Each course is site specific, designed to fit the available footprint.
- + **Versatile:** Indoor and outdoor configurations can be made to suit any budget and site layout
- + **Flexible integration:** Branded or IP theming allow the attraction to complement any space
- + **Entrance/exit options:** Course can be designed with multiple slide designs and entrance towers.

ADVENTURE TYKES™

7 TOWERS



PLAN



ELEVATION

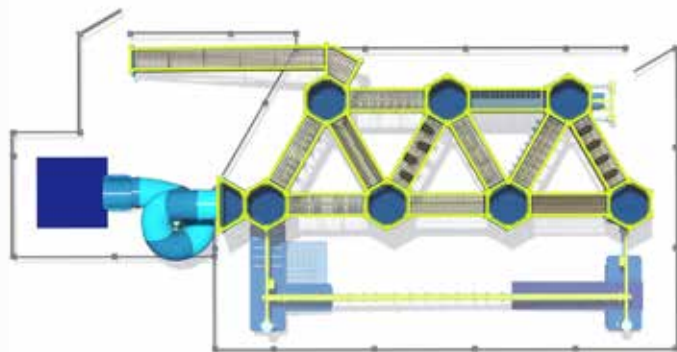
DATA TABLE

Adventure Tykes course

# of Elements	Instant Capacity	Capacity Per Hour	Approx. Dwell Time	Imperial (ft/in)			Metric (m)		
				Length	Width	Area	Length	Width	Area
18	40	80	30	53'10"	32'8"	1759 ft ²	16.41 m	9.96 m	164 m ²
Top of Steel Height				15'0"			4.57 m		

ADVENTURE TYKES™

7TOWER (INSTALLED OVER SKY TYKES®)



— PLAN —



— ELEVATION —

DATA TABLE

Adventure Tykes™ over Sky Tykes® course

# of Elements	Instant Capacity	Capacity Per Hour	Approx. Dwell Time	Imperial (ft/in)			Metric (m)		
				Length	Width	Area	Length	Width	Area
11	25	75	20	51'7"	18'3"	942 ft ²	15.73 m	5.57 m	88 m ²
Top of Steel Height				14'10"			4.52 m		



ADVENTURE TYKES™ NET-PLAY EXPERIENCE

With installation options as a standalone course or built utilizing your existing Sky Tykes® poles, the Adventure Tykes net-play course is a great low labor, high participation attraction to add to your portfolio. Young adventurers will love the challenge of the wide variety of bridge elements.





Destination

Say hello to RCI's newest product offering that's bigger and more show-stopping than ever. This multi-attraction entertainment hub combines both harnessed and unharnessed play to create a unique interactive space for large amusement parks and water parks alike. Looking to expand your hands-on activities or cater to crowds of hundreds at one time? Search no further. The Destination series is the solution you need.

With 3 configurations to choose from and 5 major attraction components included in each, there's no shortage of excitement. Participants are also able to engage with various difficulty levels depending on which attraction they decide to venture onto, i.e. unharnessed netplay or Clip 'n Climb® climbing challenges. Needless to say, the entire family is encouraged to join in whether that's actively participating or watching on the sidelines with the camera ready!

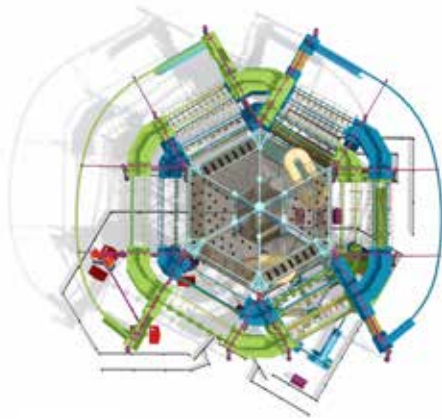
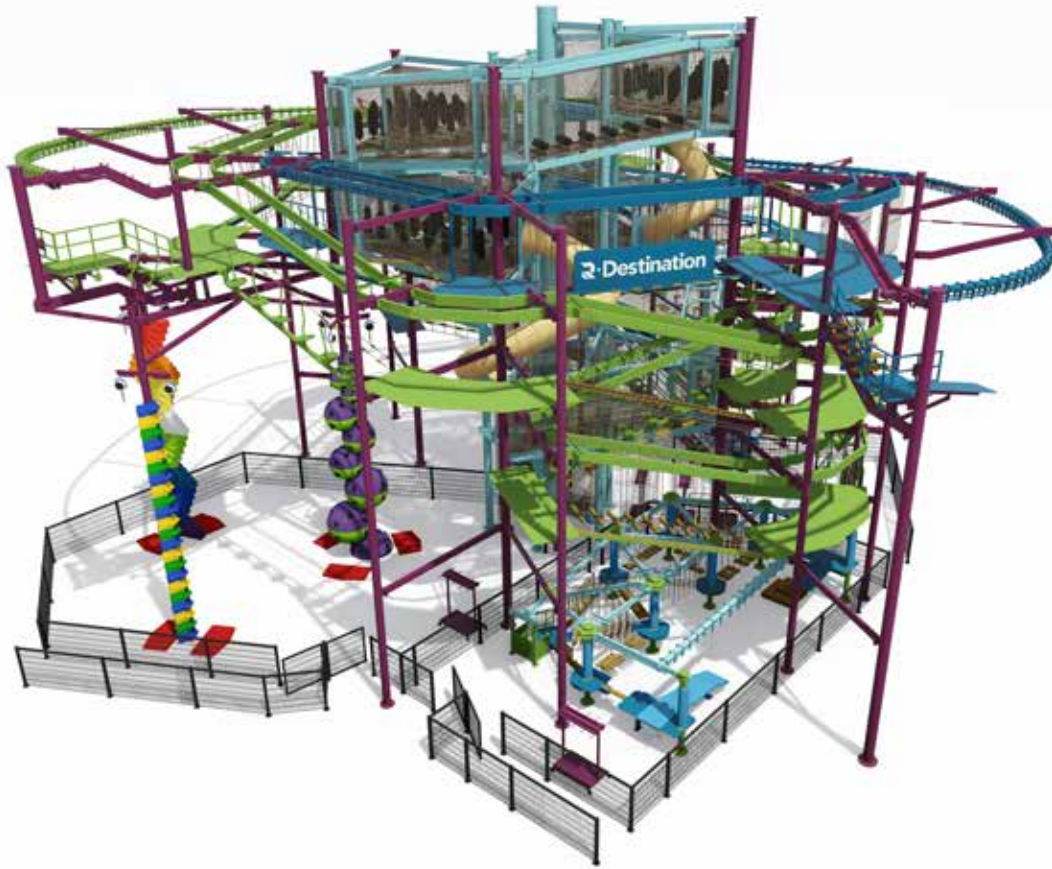
FEATURES & BENEFITS

- + **5 core attractions:** A Sky Trail® with multiple Sky Rails®, Clip 'n Climb® climbing challenges, Sky Tykes® and Adventure Trail unharnessed activity areas are included
- + **High capacity:** Able to accommodate over 200 participants at a time depending on the model
- + **Unique exits:** Participants are able to leave the attraction via slide if they desire
- + **Varying square footage:** Structure footprints range from 800 to 1,300 square meters

**Note: Additional colors and theming available.*

DESTINATION

MONUMENT



PLAN

ELEVATION

DATA TABLE

Destination Monument

# of Elements	Instant Capacity	Capacity Per Hour	Imperial (ft/in)			Metric (m)		
			Length	Width	Area	Length	Width	Area
40	225	950	106' 11"	99' 11"	10689 ft ²	32.59m	30.46m	993m ²
Unique Sky Rail® Lengths			98' 0"			29.87m		
Clearance Under Course			9' 0"			2.75m		
Top of Steel Height			56' 8"			17.28m		



Amaze'n Mazes™

A mix of friendly competition and problem solving, Amaze'n Mazes™ are guaranteed to supply participants of all ages with a healthy dose of fun. Guests enter the mazes and race for the exit in the fastest time possible all the while sharpening their navigation skills. Within the maze, participants can engage in various activities like reaching cleverly hidden checkpoints to spell out the word 'maze'. Amaze'n Mazes™ are capable of providing year-round excitement for visitors as they are extremely versatile, safe, durable and compliment a variety of other attractions.

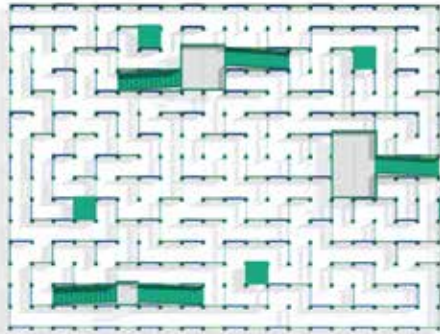
FEATURES & BENEFITS

- + **High capacity:** A 5,200 ft² maze can accommodate up to 320 people at one time or 700 per hour
- + **Year-round entertainment:** Operational in any type of weather excluding extreme or dangerous conditions
- + **Minimal maintenance:** Durable steel materials have proven longevity of 20+ years
- + **Theming capabilities:** Array of color options and custom theming to complement any environment
- + **Minimal staff:** One staff person is needed to monitor the entrance and exit to punch each runner's passport with the time they enter the maze and the time they leave
- + **Included features:** 2 time clocks, 4 game hole punchers, signage

**Note: Time clocks & punch system makes the maze a contest for participants. There are 4 checkpoints throughout the maze participants need to find and punch on their passport card. Observation decks & elevated platforms are available for an additional cost.*

AMAZE'N MAZE™

5200 S.F. WITH 1 OBSERVATION DECK AND 2 PLATFORMS



PLAN



ELEVATION

DATA TABLE

5200 s.f. Amaze'n Maze™ with (1) observation deck and (2) platforms

# of Posts	# of Panels	Infant Capacity	Imperial (ft/in)			Metric (m)		
			Length	Width	Area	Length	Width	Area
336	334	347	84' 3"	61' 9"	5203 ft ²	25.68m	18.83m	484m ²
Top of Steel Height			11' 9"			3.59m		

*Note: Themed panels are available. Overall layout and number of observation decks and platforms can vary based on client and site specific needs. Custom color options are available.

COLOR OPTIONS

Select up to two colors from the swatches below to be used on your Amaze'n Maze panels. Select one color from the colors and schemes section on page 25 to be used on columns, platforms, and checkpoints.



COLOR OPTIONS



BURGUNDY



SCARLET



RUSSET



SANDSTONE



MARIGOLD



LIME GREEN



MOSS



COVE SEAFOAM



TURQUOISE



COBALT



COVE BLUE



GREY



BEIGE



COVE BROWN

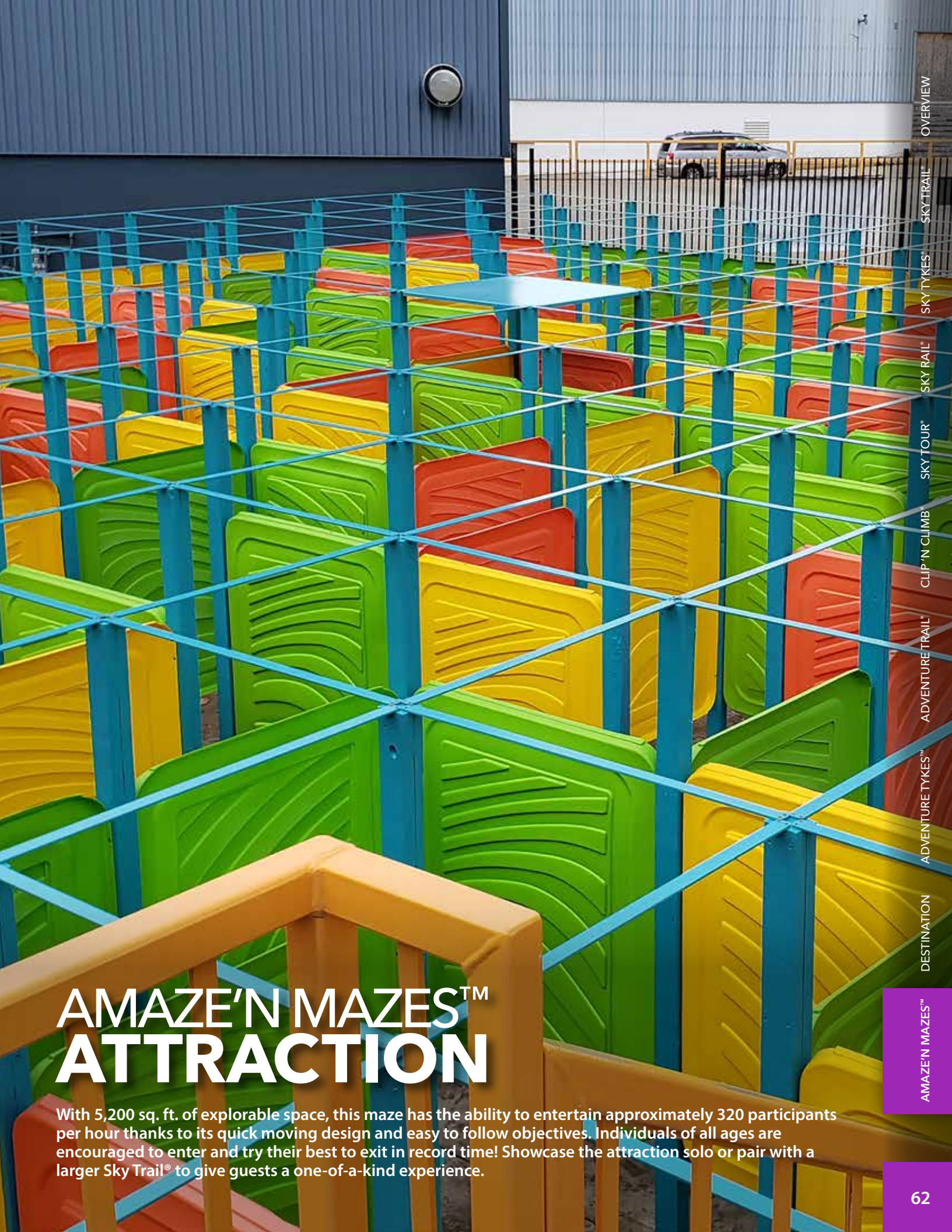


FATIGUE



WEATHERED BARK

**Note: Custom color options are available for an additional cost.*



AMAZE'N MAZES™ ATTRACTION

With 5,200 sq. ft. of explorable space, this maze has the ability to entertain approximately 320 participants per hour thanks to its quick moving design and easy to follow objectives. Individuals of all ages are encouraged to enter and try their best to exit in record time! Showcase the attraction solo or pair with a larger Sky Trail® to give guests a one-of-a-kind experience.

OVERVIEW

SKY TRAIL

SKY TYKES

SKY RAIL

SKY TOUR

CLIP 'N CLIMB

ADVENTURE TRAIL

ADVENTURE TYKES

DESTINATION

AMAZE'N MAZES

62





CONTACT

277 North Street | Allegan, MI 49010
(269) 673-0016 | TF: (877) 203-0557

www.rciadventure.com



v. 05.24

Patents: www.rciadventure.com/patents